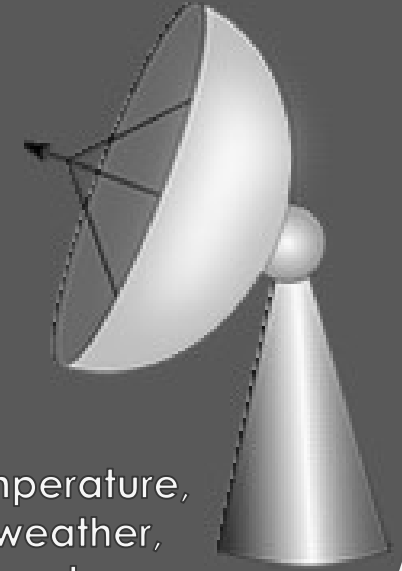


# WEATHER FORECASTING INFORMATION

Year 2 & up  
ESL, EAL, EFL  
ESOL  
students

Celsius  
&  
Fahrenheit



meteorology, meteorologists, weather instruments,  
Celsius & Fahrenheit, weather conditions, weather aspects, wind, temperature,  
precipitation, humidity, air pressure, difference between climate & weather,  
importance of weather forecasts – agriculture, shipping, fishery, forestry,  
transportation – aircraft, word lists, meanings, book summary



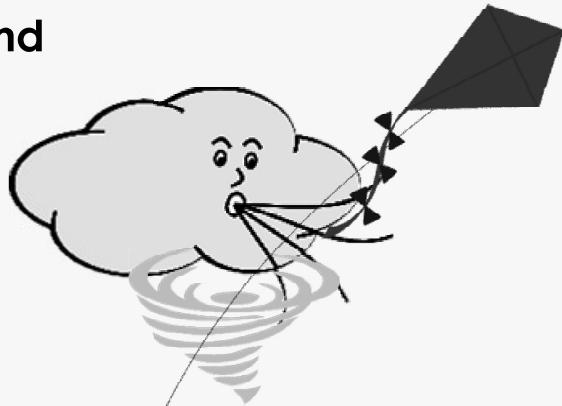
by Jeanette Vuuren

Volume 3

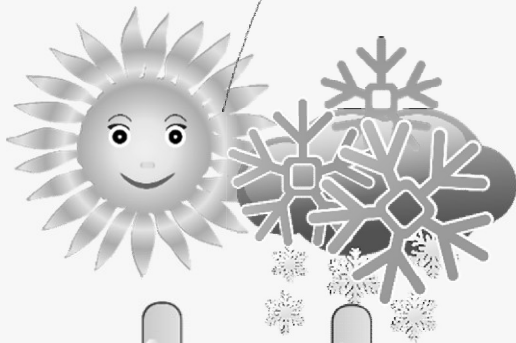
Aligned to  
COMMON  
CORE  
STANDARDS  
&  
AUSTRALIAN  
CURRICULUM

# ASPECTS IN NATURE THAT HELP PREDICT THE WEATHER

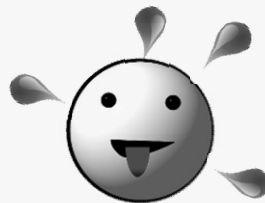
wind



precipitation



temperature



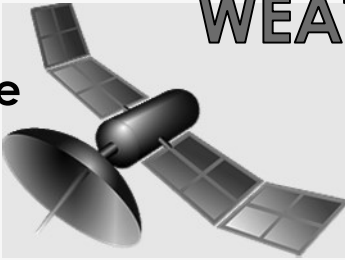
humidity



air pressure

# WEATHER EQUIPMENT & INSTRUMENTS

satellite



weather vane



anemometer



compass

weather balloon



wind sock



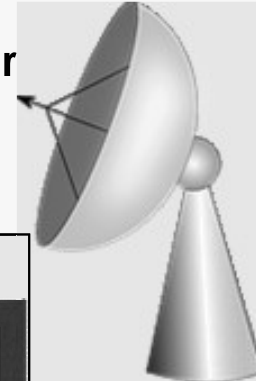
rain gauge



thermometer



radar



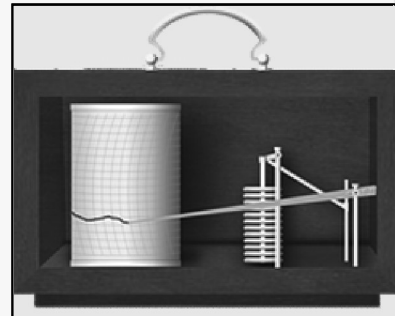
weather station



hygrometer



barograph



barometer



# FISHERY



fishermen



boats



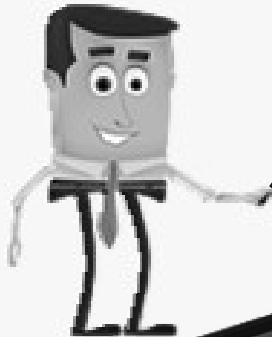
heron eating fish



fish



# W



Which of these words  
and pictures are  
related to **fishery**?



laptop computer



fishing rod



# FORESTRY



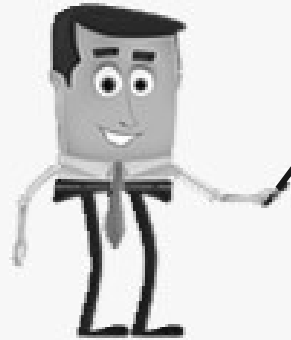
germination

growth of plants



trees

harvest



Which of these words and pictures tell us more about **forestry**?

Earth



W

beach



danger or fires



# TRANSPORTATION



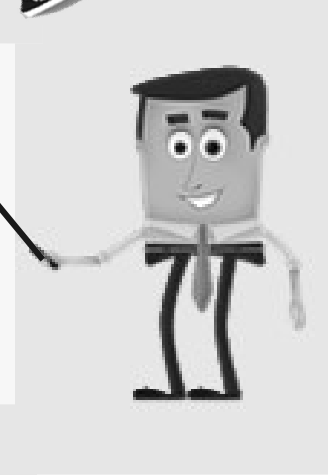
helicopter



aeroplane



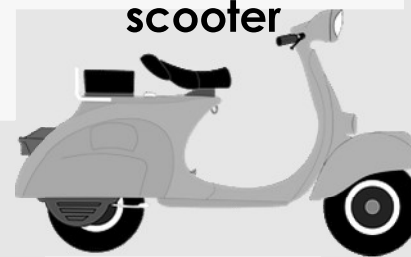
Which of these words and pictures indicate *transportation*?



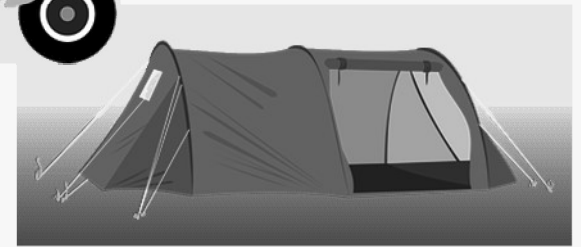
truck



scooter



tent



W



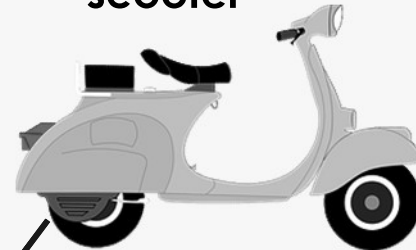
vessel

# AVIATION INDUSTRY

aeroplane



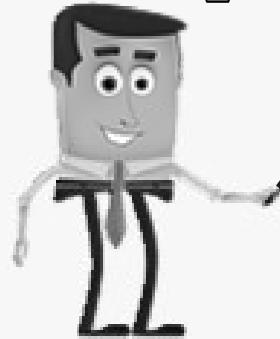
scooter



helicopter



W



Which of these words and pictures can be sorted under the heading '**aviation industry**'?

taking off



aircraft



landing

runway

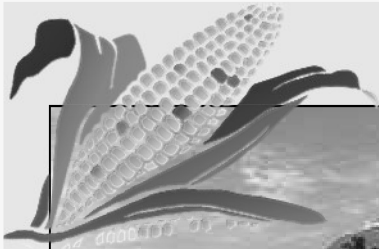
# AGRICULTURE

earth and soil

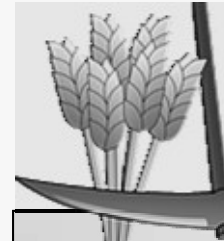
tractor

# W

crop fields



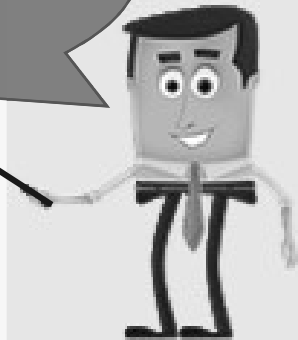
harvest



Which of these words and pictures are related to **agriculture**?



farmer

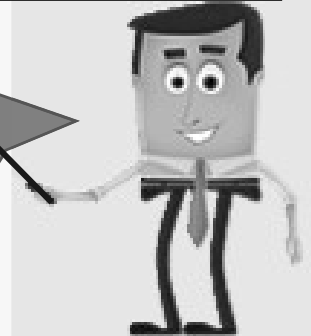




# SHIPPING

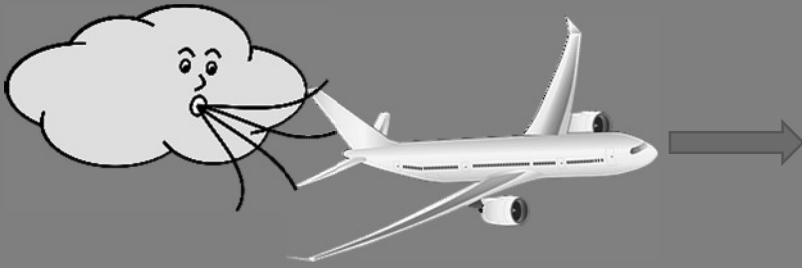


Which of these words and pictures are associated with **shipping**?



# AVIATION - MEANINGS

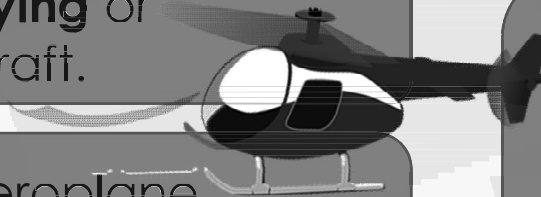
**TAILWIND** - a **wind blowing in the direction** of travel of a vehicle or aircraft; a wind blowing from behind.



**JET STREAM** - strong predominantly **westerly air currents** encircling the globe several miles above the earth

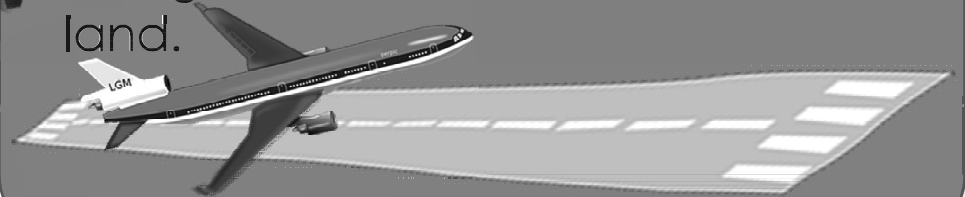


**AVIATION** - the **flying** or operating of aircraft.



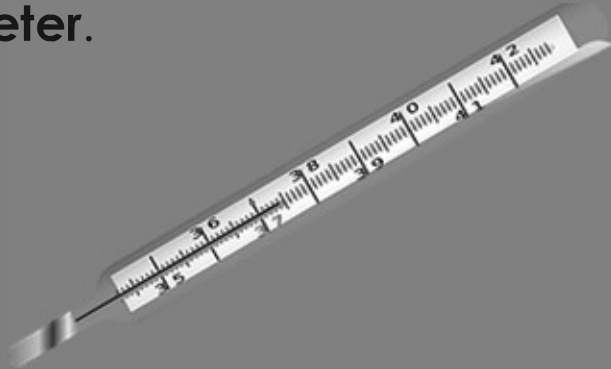
**AIRCRAFT** - an aeroplane, helicopter, or other machine **capable of flight**.

**RUNWAY** - a **strip** of hard ground along which aircraft take off and land.



# PREFIXES - MEANINGS

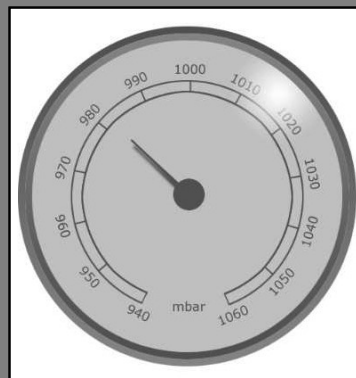
**THERMO** – related to heat e.g. thermometer.



**HYGRO** – related to moisture e.g. hygrometer.



**BARO** – related to pressure e.g. barometer.



**barograph**

