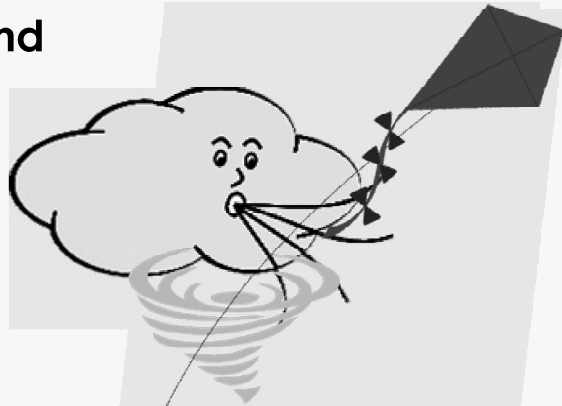


# ASPECTS IN NATURE THAT HELP PREDICT THE WEATHER

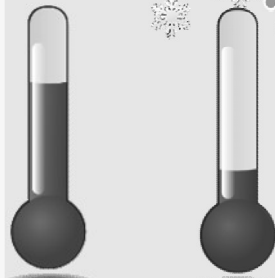
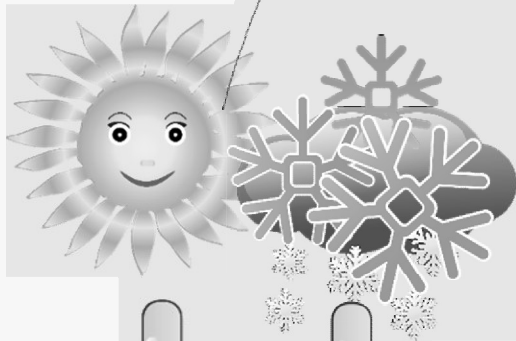
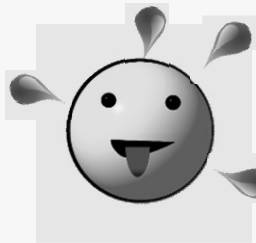
wind



precipitation



humidity



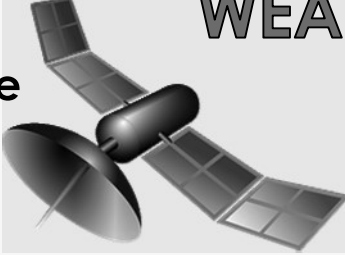
temperature



air pressure

# WEATHER EQUIPMENT & INSTRUMENTS

satellite



weather vane



anemometer



compass

weather balloon



wind sock



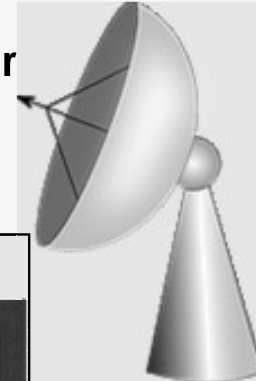
rain gauge



thermometer



radar



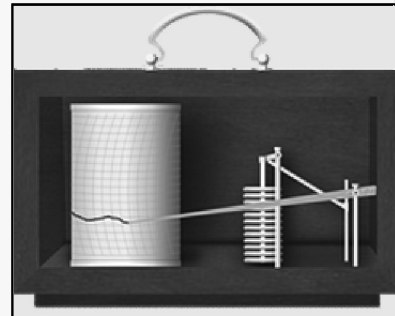
weather station



hygrometer



barograph



barometer



# FISHERY



fishermen



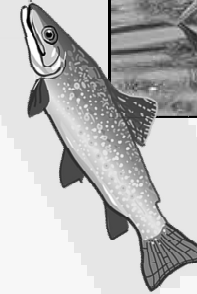
boats



heron eating fish

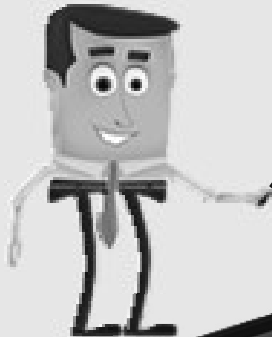


fish

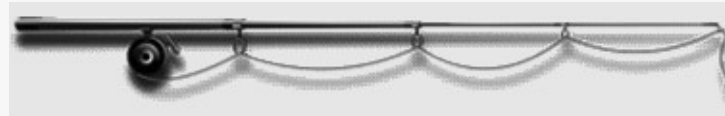


# W

Which of these words and pictures are related to **fishery**?



laptop computer



fishing rod



# FORESTRY



germination



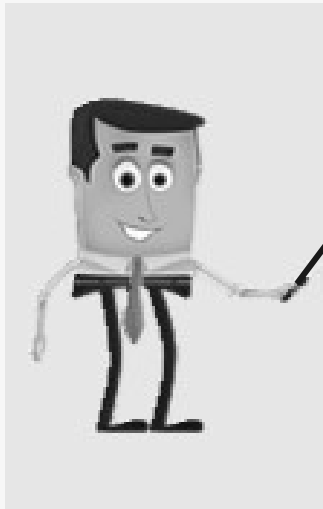
growth of plants



trees



harvest



Earth

Which of these words and pictures tell us more about **forestry**?



W



beach



danger or fires

# TRANSPORTATION



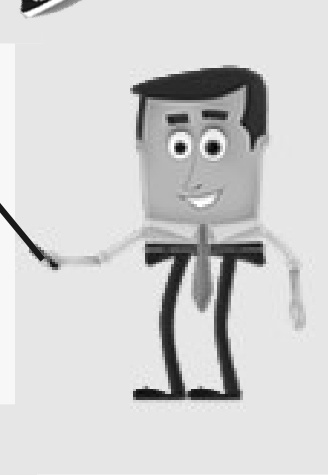
helicopter



aeroplane



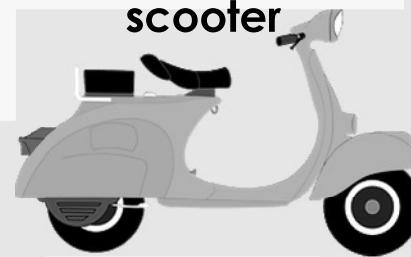
Which of these words and pictures indicate *transportation*?



truck



scooter

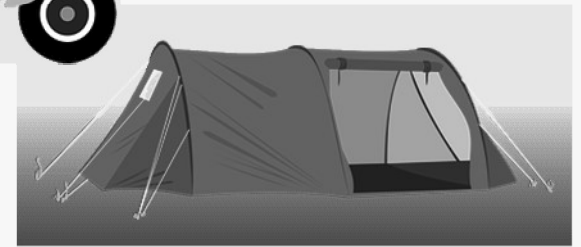


W



vessel

tent

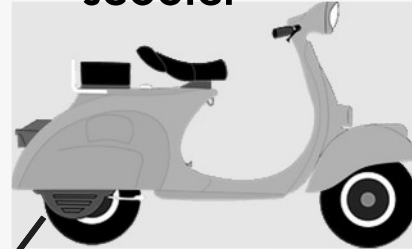


# AVIATION INDUSTRY

aeroplane



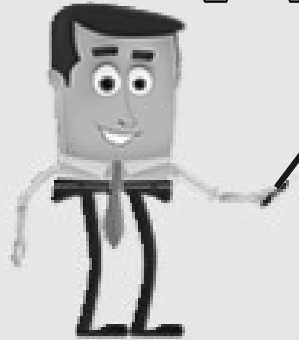
scooter



helicopter



W



Which of these words and pictures can be sorted under the heading '**aviation industry**'?

taking off

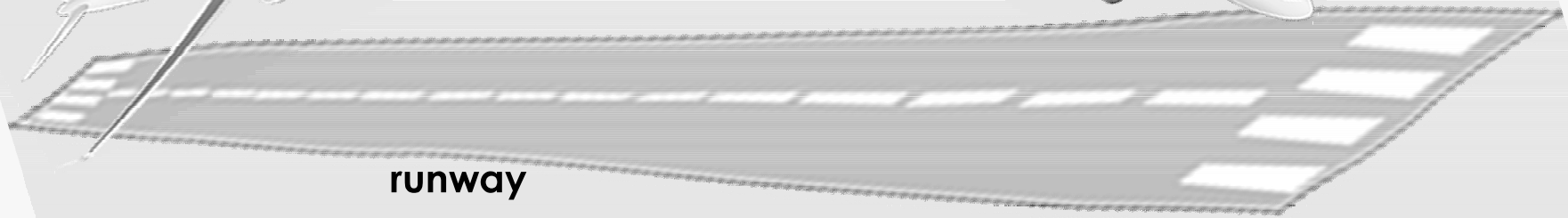


aircraft



landing

runway



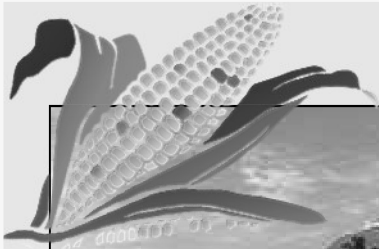
# AGRICULTURE

earth and soil

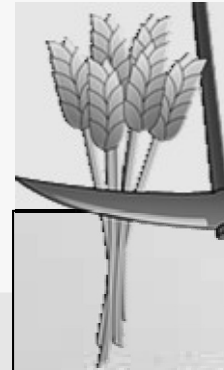
tractor

W

crop fields



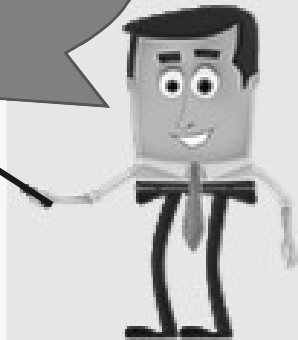
harvest



Which of these words and pictures are related to **agriculture**?



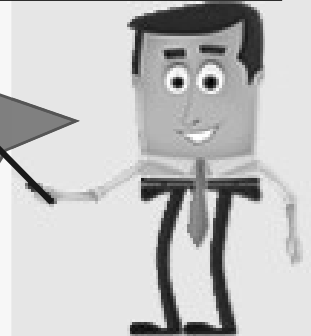
farmer



# SHIPPING



Which of these words and pictures are associated with **shipping**?





# AVIATION - MEANINGS

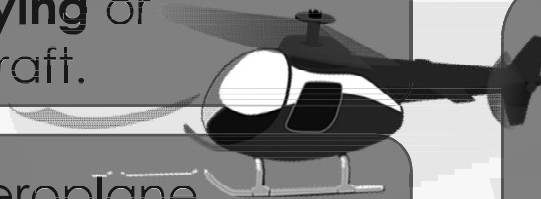
**TAILWIND** - a **wind blowing in the direction** of travel of a vehicle or aircraft; a wind blowing from behind.



**JET STREAM** - strong predominantly **westerly air currents** encircling the globe several miles above the earth

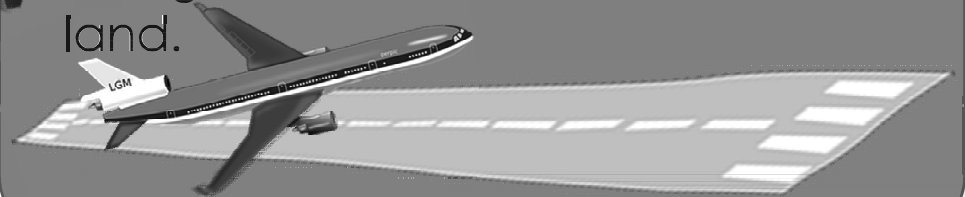


**AVIATION** - the **flying** or operating of aircraft.



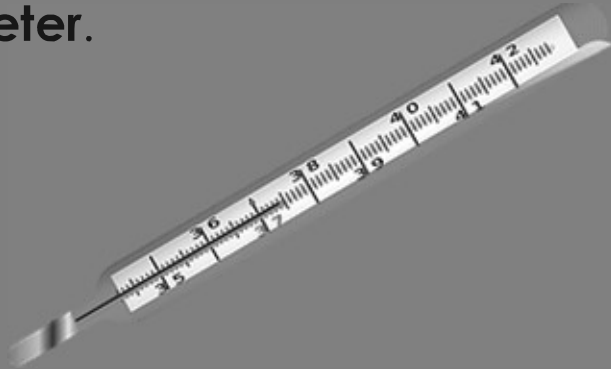
**AIRCRAFT** - an aeroplane, helicopter, or other machine **capable of flight**.

**RUNWAY** - a **strip** of hard ground along which aircraft take off and land.



# PREFIXES - MEANINGS

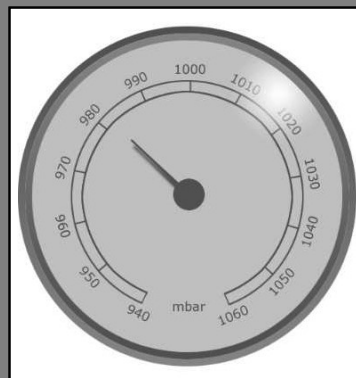
**THERMO** – related to heat e.g. thermometer.



**HYGRO** – related to moisture e.g. hygrometer.



**BARO** – related to pressure e.g. barometer.



**barograph**

